

PLANE GEOMETRY



- Lines
- Angles
- Polygons
- Formulas

KNOW: Students will be able to identify and define point, line, line segment, ray and angle.

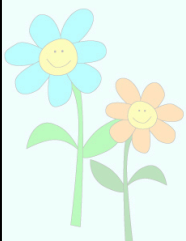


SHOW: Students will correctly define, draw and label point, line, line segment, ray and angle.

WARM UP

Draw **and** label each of the following. If you're unsure, you may guess.

- point C
- line MN
- line segment PQ
- ray JK
- angle ABC



NOTES

Edit

Reset

?

- 1 A point is an exact location.
- 2 A line extends without end in both directions.
- 3 A line segment has 2 endpoints.
- 4 A ray has 1 endpoint and extends on the other side.
- 5 An angle is formed by 2 rays with a common endpoint.

Match the word with the correct diagram.

ray

line segment

line

angle

point

Geometry Word Guess

Edit

?

Goals 0 Misses 0

a b c d e f g
h i j k l m n
o p q r s t u
v w x y z



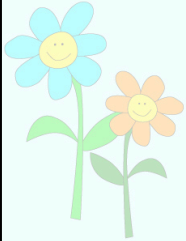
Reset

Buy a letter

Clue

Sound

COOL DOWN



Draw **and** label

each of the
following:

- point D
- line RS
- line segment XY
- ray FG
- angle DEF

ANGLES

KNOW: An angle is
formed by two rays with
a common endpoint.



SHOW:
Students will
name, measure,
classify and
draw kinds of
angles.

WARM UP

A. What is the value of the **red** digit in each number?

1) 649,809

2) 27,463

B. Find the value of the following.

3) 5^2

4) 4^3



C. Evaluate the following.

5) $4 \times 3^2 + 8 - 16$

VOCABULARY

Edit Reset ?

- 1 The vertex is the common endpoint for two rays.
- 2 A straight angle measures exactly 180 degrees.
- 3 A right angle measures exactly 90 degrees.
- 4 An acute angle is less than 90 degrees.
- 5 An obtuse angle is greater than 90 degrees.

Identify each of the following angles.

skool.com

Angle Measure 1 - Acute and Obtuse

Click and hold the protractor to zoom, and drag it either up or down to view the angle. When finished click on it again to close.

Start Stop

Enter Angle:

Choose Angle Type:


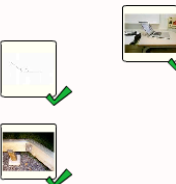

☐ Acute

☐ Obtuse

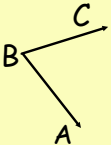
Check

SMART Supporting Education intel

EditCheckResetSolve?

| Acute | Obtuse | Right |
|---|---|---|
|  |  |  |

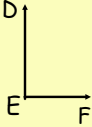
3 Ways to name angles



< ABC

< CBA

< B



< DEF

< FED

< E

Name and identify this angle on your own.

